

## FMC-B18 COLUMN FOR LIGHT CURTAINS

### GENERAL

These mounting instructions contain information about the correct mounting of the column.

- The assembly of the **FMC-B18** with the column rotation flange;
- The assembly of the **FMC-B18** stand for mounting on the **FMC-CB/FMC-CBL** stand bottom;
- The correct mounting of the barrier on the column (rif. Normative ISO 13855 / EN999-2008);
- Alignment Emitter - Receiver;
- Dimensions;

Please find detailed information about the function of the light curtains / light grids in the relevant mounting and wiring instructions.

### ASSEMBLY OF THE FMC-B18 WITH THE ROTATION FLANGE (Fig. 1)

- Assembly the rotation flange with the profile using the correct provided screws (as shown in figure 1).

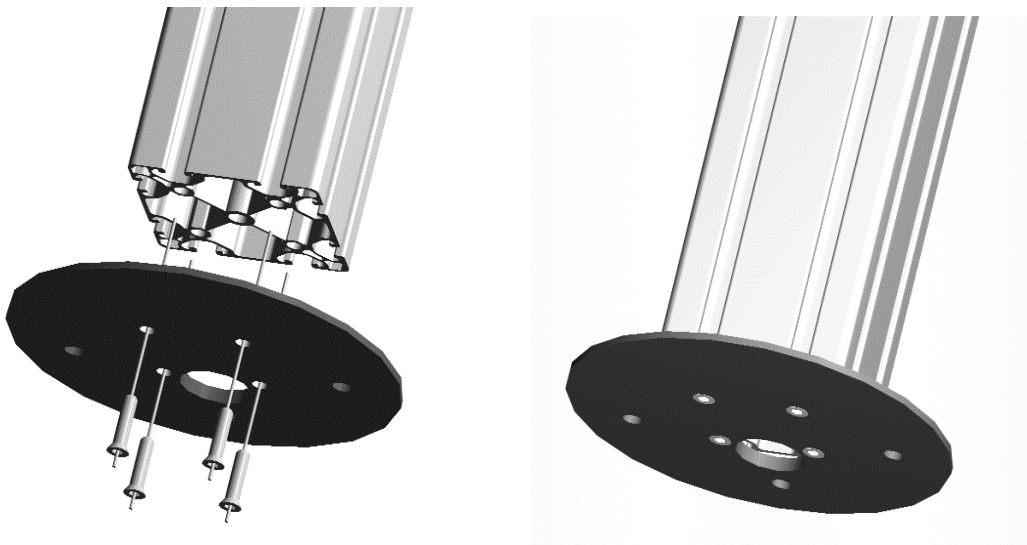
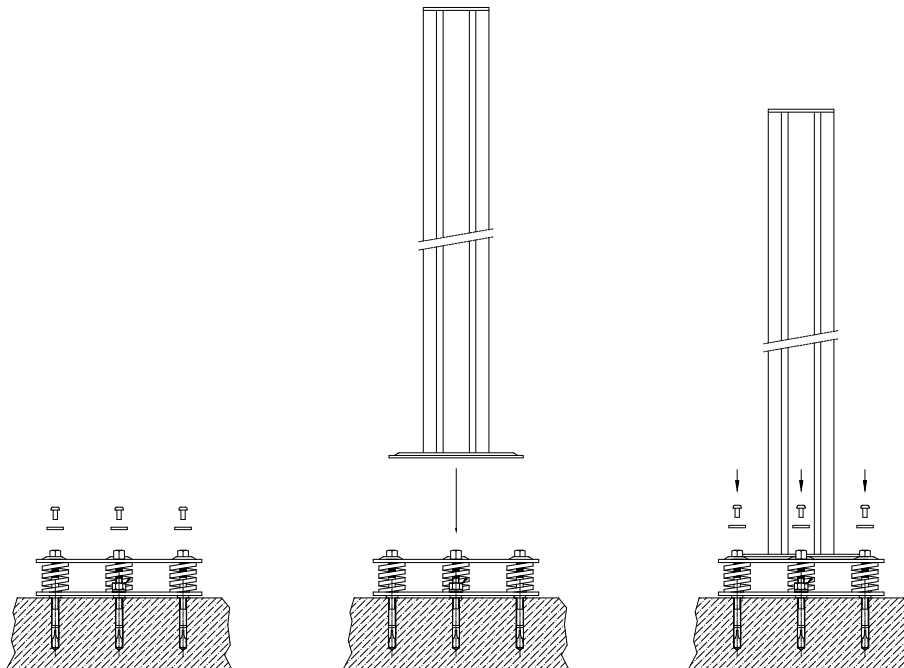


Figure 1

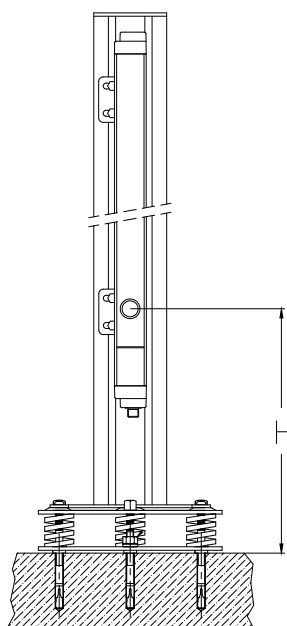
**ASSEMBLY OF THE FMC-B18 STAND WITH THE STAND BOTTOM; (Fig. 2)**

- Mount the **FMC-CB/FMC-CBL** stand bottom on the floor (see mounting instruction for stand bottom).
- Loosen the three allen screws and remove the washers.
- Assembly the column to the stand bottom, centering the FMC-B column rotation flange with the guides of the **FMC-CB/FMC-CBL** stand bottom upper plate.
- Fix the column tightening the three allen screws and the washers.



**Figure 2**

**EXACT POSITION OF THE BARRIER ON THE COLUMN (Fig. 3)**



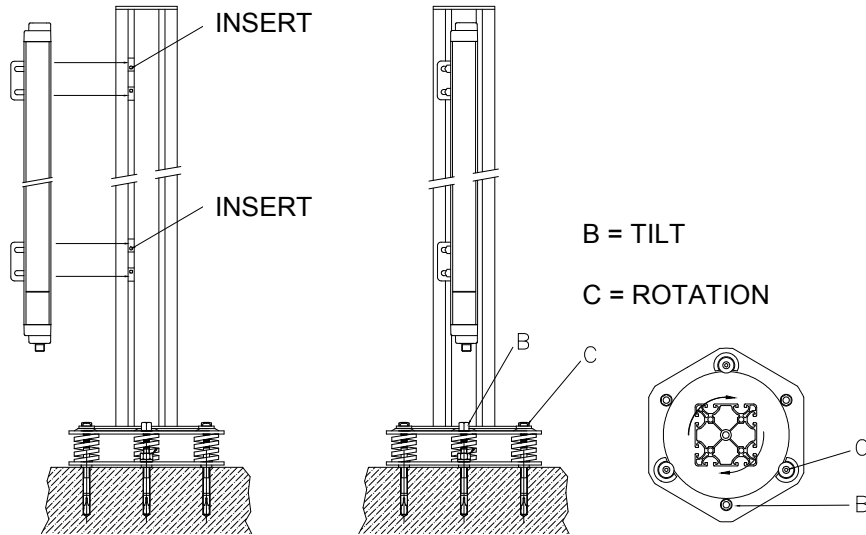
- You will find the exact position of the barrier in the table below (distance between the first light beam and the ground); (rif. Normative ISO 13855 / EN999-2008).

MODEL	2B 2 BEAMS	3B 3 BEAMS
H	400	300

**Figure 3**

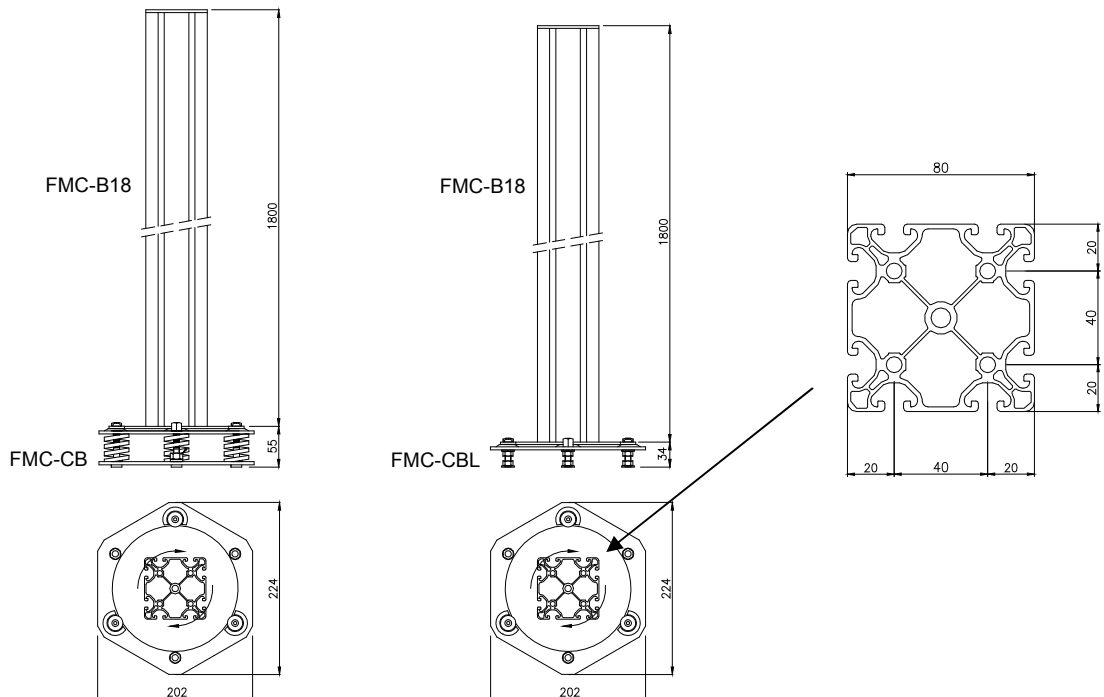
**BARRIER ASSEMBLY AND ALIGNMENT (Fig. 4)**

- Put in the chosen slot the provided inserts (push to insert);
- Assemble the barrier to the column with the provided brackets;
- Perform leveling fine adjustments by means of the hexagonal nuts of the stand bottom (**B**).
- For an exact alignment of emitter and receiver, loosen the three allen screws (**C**) that fix the rotation flange and rotate the two columns until the barrier signal LEDs light on (ref. Technical manual).



**Figure 4**

**DIMENSIONS (Fig. 4)**



**Figure 5**